

THE ALTR

DATA ADVENTURES

THE DATA WATCHER AND THE INVASION OF THE DATA SNATCHERS

SENSITIVE DATA IS NECESSARY TO THE BUSINESS, BUT IT MUST BE PROTECTED ACCORDING TO PRIVACY REGULATIONS. THE DATA WATCHER STANDS GUARD.

INSIDE THE DATA CASTLE...

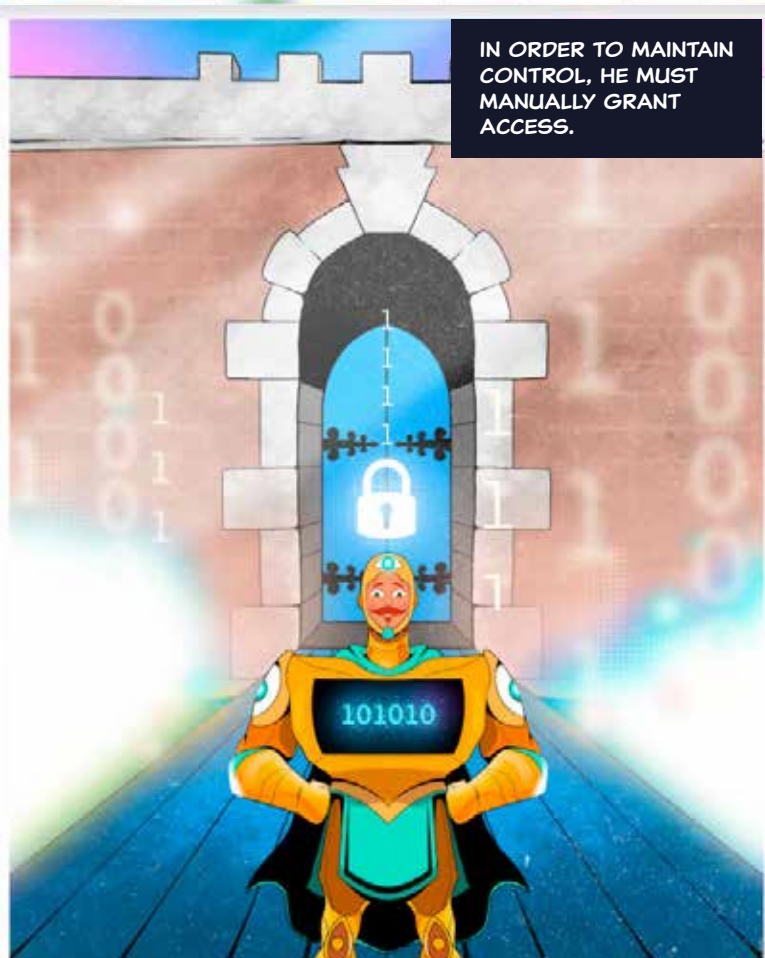


BUT OFTEN THE DATA WATCHER CAN'T SEE EVERYONE ACCESSING THE DATA OR KNOW HOW MUCH DATA THEY'RE TAKING.

AAAAAAAHH!



IN ORDER TO MAINTAIN CONTROL, HE MUST MANUALLY GRANT ACCESS.



HEY! WHAT'S GOING ON IN THERE!?

HURRY UP! YOU'RE HOLDING UP THE LINE!



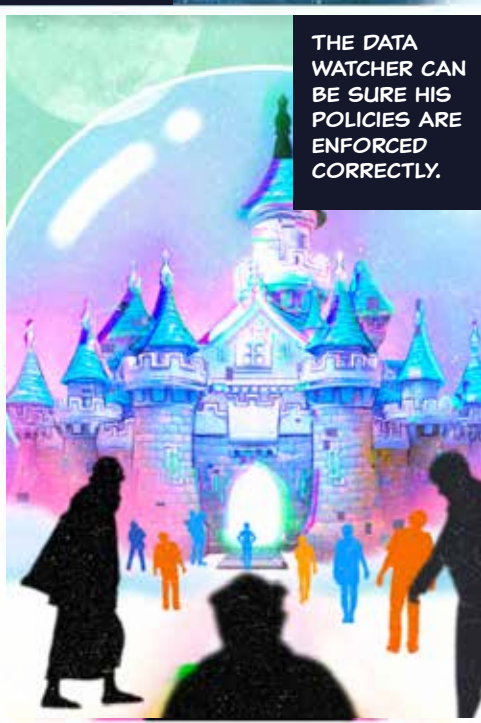
THIS IS SLOW AND ERROR-PRONE PROCESS CREATES RISK - THE GATE MIGHT OPEN TO THE WRONG PEOPLE, ALLOW THEM TO TAKE TOO MUCH DATA OR STAY OPEN TOO LONG...



ALTR ALLOWS DATA WATCHERS TO AUTOMATICALLY ALLOW ONLY APPROVED USERS TO HAVE ACCESS TO THE RIGHT DATA. THIS SPEEDS UP THE PROCESS AND ELIMINATES HUMAN ERROR.



THE DATA WATCHER CAN BE SURE HIS POLICIES ARE ENFORCED CORRECTLY.



STOP GATE CRASHERS AND ENSURE SENSITIVE DATA IS ONLY AVAILABLE TO THOSE WHO NEED IT WITH ALTR.



GAIN THE POWER OF ALTR AT ALTR.COM